

SELECTION AND ORDERING DATA

Single phase induction motor



• **2** Pole 3000 rpm

Type	Frame size	Rated output (kw)		Full load current at 220 V Amp	Full load Speed rpm	Power factor $\cos\phi$	Bearing		Weight approx kg	Capacitor start μF	Capacitor run μF
		Hp	kW				Power side	Fan side			
DS-A1-071M-02	71	0.55	0.37	2.85	2760	0.99	6202	6202	8.22	-	12.5
DS-A1-080M-02	80	1.00	0.75	7.0	2855	0.96	6204	6204	11.70	80	25
DS-A1-080Q-02	80	1.50	1.10	8.2	2840	0.97	6204	6204	13.22	130	40
DS-A1-090L-02	90	2.00	1.50	13.4	2780	0.98	6205	6205	18.58	150	40
DS-A1-090Q-02	90	3.00	2.20	16.7	2860	0.97	6205	6205	21.24	300	50

Type	Frame size	Rated output (kw)		Full load current at 220 V Amp	Full load Speed rpm	Power factor $\cos\phi$	Bearing		Weight approx kg	Capacitor start μF	Capacitor run μF
		Hp	kW				Power side	Fan side			
DS-A1-071N-04	71	0.33	0.25	2.0	1350	0.98	6202	6202	5.60	-	10
DS-A1-071M-04	71	0.50	0.37	3.0	1370	0.96	6202	6202	7.84	-	14
DS-A1-080Q-04	80	1.00	0.75	6.4	1400	0.97	6204	6204	12.76	88	25
DS-A1-090N-04	90	1.50	1.10	9.8	1410	0.99	6205	6205	16.78	140	40
DS-A1-090H-04	90	2.00	1.50	11.5	1430	0.97	6205	6205	22.82	150	50
DS-A1-100H-04	100	3.00	2.20	16.7	1430	0.98	6206	6206	28.00	300	60

Model	Characteristic Curve	Connection Diagram	Applications
DS-A1-071N-04 DS-A1-0806-04		<p>C_B = Running capacitor</p>	Drilling machine Blower Fan
DS-A1-080Q-04 DS-A1-090N-04 DS-A1-090H-04 DS-A1-100H-04		<p>C_A = Starting capacitor C_B = Running capacitor Sw = Centrifugal switch</p>	Pump Compressor Conveyer Agricultural machinery

DIMENSIONS

Single phase induction motor

SINGLE PHASE INDUCTION MOTOR

Type :

Totally enclosed fan-cooled squirrel cage

Insulation

Class H (200 °C)

Frame size 71-100

IEC-Publication 72, 5th issue and DIN 42673/4.64

Shaft heights

DIN 747/6.67 H tol-0.5 mm.

Shaft ends

DIN 748/1.70 D DA, k6°, DIN 7160

Keys

DIN 6885, p. 1/8.68

Tapped center hole

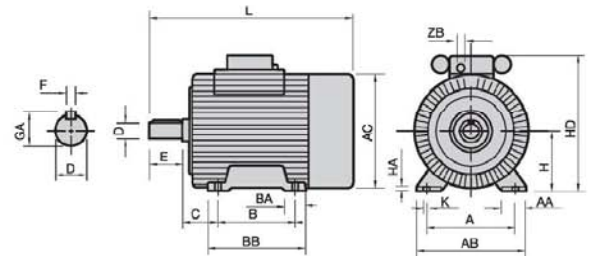
DIN 332, p. 2/10.70, form D

All dimensions in mm.

The dimensions A, B, C, H, K, D, E, F, GA are certified

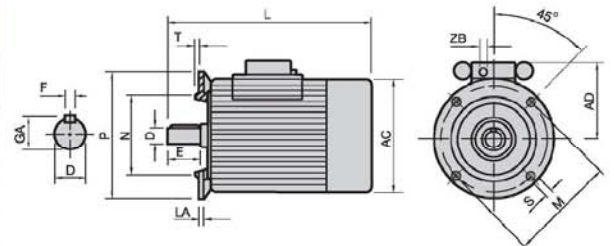
FOOT : B3

Frame size	Mounting (mm)										Body (mm)				Shaft ends (mm)			
	A	AA	AB	B	BA	BB	C	H	HA	K	AC	HD	L	ZB	D	E	F	GA
71 N, M, Q	112	27	135	90	29	110	45	71	7	7	142	189	230.5	Pg16	14	30	5	16
80 M, Q	122	32	135	100	33	125	50	80	9	10	160	209	289	Pg16	19	40	6	21.5
90 N	140	35	170	100	35	128	56	90	10	10	183	229	302	Pg16	24	50	8	27
90 L, H	140	35	170	125	35	153	56	90	10	10	183	229	345	Pg16	24	50	8	27
100 H	160	42.5	195	140	42.5	175	63	100	12	13	204	258	385	Pg21	28	60	8	31



FLANGE : B5, V1, V3

Frame size	Mounting (mm)						Body (mm)				Shaft ends (mm)			
	LA	M	N	P	S	T	AC	AD	L	ZB	D	E	F	GA
71 N, M, Q	9	130	110	160	10	3.5	142	110	237	Pg16	14	30	5	16
80 M, Q	10	165	130	200	12	3.5	160	129	269	Pg16	19	40	6	21.5
90 S	10	165	130	200	12	3.5	183	139	302	Pg16	24	50	8	27
90 L	10	165	130	200	12	3.5	183	139	327	Pg16	24	50	8	27
100 L, H	11	215	180	250	14	4.0	204	158	386	Pg21	28	60	8	31



FLANGE : B14, V18, V19

Frame size	Mounting (mm)						Body (mm)				Shaft ends (mm)			
	LA	M	N	P	S	T	AC	AD	L	ZB	D	E	F	GA
71 N, M, Q	12	85	70	105	M6	2.5	142	118	237	Pg16	14	30	5	16
80 M, Q	12	100	80	120	M6	3.0	160	129	269	Pg16	19	40	7	21.5
90 S	10	115	95	140	M8	3.0	183	139	345	Pg16	24	50	7	27
90 L	10	115	95	140	M8	3.0	183	139	370	Pg16	24	50	7	27
100 L, H	12	130	110	160	M8	3.5	204	204	418	Pg21	28	60	7	31

